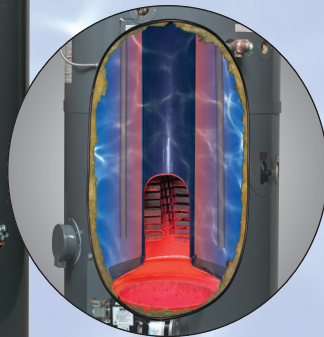




## Power Gas Water Heaters Residential/Light Commercial: Single-Flue



**Patented Turboflue®  
heat exchanger**

Fan-assisted burners give Bock Power Gas water heaters increased recovery rates, clean combustion and higher efficiencies.

Whatever your hot water needs, there's a Bock, just right for you:

Bock water heaters are perfect for all residential applications, particularly those with high-volume hot water demands. Today's homes not only require a dependable and economic hot water source for traditional uses like dishwashing, laundering and cleaning, but also one that offers fast recoveries to meet the demands of more sophisticated shower systems, whirlpools and radiant flooring systems.

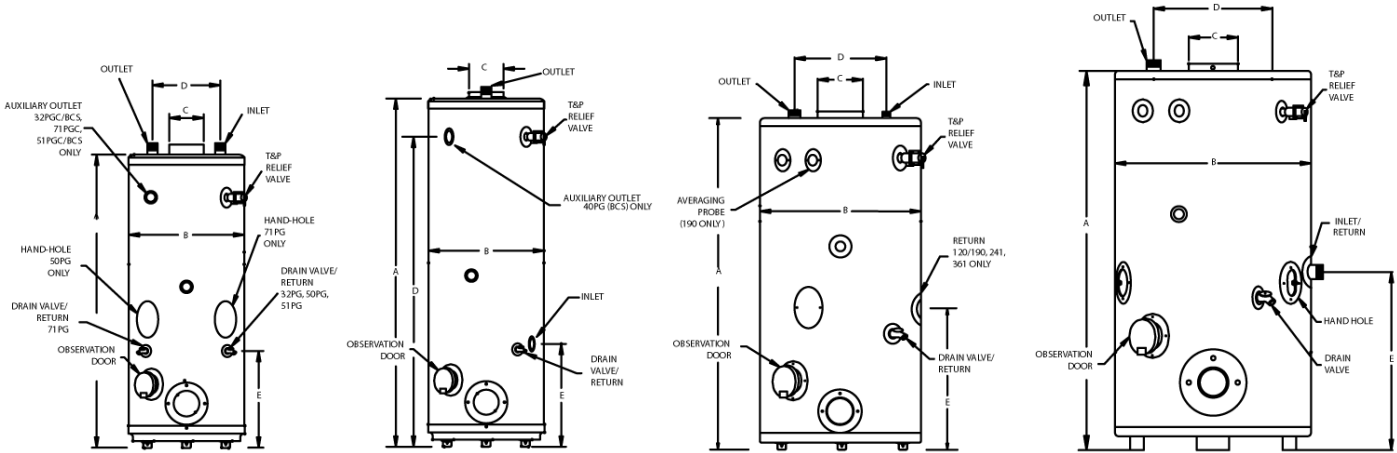
In commercial and industrial applications; from light demand to continuous-use requirements, our outstanding recovery capabilities make Bock water heaters ideal for multi-dwelling units (MDUs - apartments, dormitories), place of worship, hospitality (hotels, motels), health care (hospitals, clinics, assisted living facilities), athletic facilities, (health clubs, spas, swimming pools), hair salons and beauty shops, farms (dairy barns), office buildings, correctional facilities, laundries, car washes, food service, schools and many more.

- ◆ **Turboflue®** - Bock's patented design is the industry's most advanced and efficient heat exchanger. Simply put, it heats water faster and uses less fuel, which reduces energy costs.
- ◆ **C<sup>o</sup>glass®** - durable and exclusive porcelain enamel glass is used to line all tanks and coat all Turboflues. Highly resistant to aggressive water. Fresh silica mixed daily to provide the highest quality.
- ◆ **Built to last** - Hand-crafted from heavy gauge steel. Longer life equals a higher "Return on Investment".
- ◆ **Dual magnesium anode rods** - Inhibit corrosion and maximize tank life. Electrolysis attacks the anode rods, not the welded seams of the tank.
- ◆ **Double pressure tested** - Only Bock pressure tests its tanks twice.
- ◆ **Fully welded tank skirt** - prevents noxious flue gases from escaping between the tank and jacket.
- ◆ **Center flue design** - reduces tank flex for longer life.
- ◆ **Fiberglass insulation** - decreases standby heat loss.
- ◆ **Accurate temperature control** - Only Bock offers dual aquastats or operating and high limits, as standard.
- ◆ **Spring loaded inspection door** - easy access for inspection and maintenance, also functions as a pressure relief valve.
- ◆ **Brass drain valve** - accessible.
- ◆ **Factory installed T&P valve** - CSA listed.
- ◆ **Hand-cast refractory lined combustion chamber** - Only one in the industry - better heat retention, warmer starts, better combustion, reduces noxious emissions.
- ◆ **UL listed.**
- ◆ **ASME construction** - available on selected models.
- ◆ **Fan-assisted burner** - facilitates proper system draft, provides clean, controlled combustion and higher efficiencies.
- ◆ **Externally mounted burner** - provides easy installation and maintenance.
- ◆ **Direct spark ignition** - with flame rod controls provides fail safe operation.
- ◆ **Connects to standard chimney** - or a power vented system.
- ◆ **Barometric draft regulator.**
- ◆ **LP gas optional.**
- ◆ **5 year limited warranty** - on steel tank (single family residential installations: 32PG - 361PG).
- ◆ **3 year limited warranty** - on steel tank (commercial installations: 541PG).

**Quality Crafted Hot Water Solutions!**



# Power Gas Water Heaters Residential/Light Commercial: Single-Flue



32PG, 50PG, 51PG, 71PG

33PG, 40PG

72PG, 73PG, 120PG, 190PG, 241PG, 361PG

541PG

Model	Storage (gal)	Rated Input (BTU/HR)	Recovery @ Δ 90°F (GPH)	Max. Temp. Setting (°F)	Inlet Pipe Dia.	Outlet Pipe Dia.	Return Pipe Dia.	Dimensions					Shipping Weight (lbs)***	
								A	B	C	D	E	Standard	ASME
32PG	32	104,000	110	160	3/4"	3/4"	3/4"	51"	20"	6"	11"	17"	312	-
33PG	33	104,000	109	160	3/4"	3/4"	3/4"	43-1/4"	24"	6"	N/A	17-1/4"	318	-
40PG	40	126,000	134	160	3/4"	3/4"	1"	61"	20"	6"	54"	18"	341	-
50PG	50	140,000	142	160 <sup>#</sup>	1"	1-1/2" **	1-1/2"	52"	26"	6"	13-1/2"	18-1/2"	409	-
51PG	50	152,000	159	160 <sup>#</sup>	1"	1"	3/4"	59"	24"	6"	11"	18"	370	-
71PG	68	173,000	170	160 <sup>#</sup>	1"	1-1/2" **	1-1/2"	66"	26"	6"	13-1/2"	22"	478	-
72PG	67	199,000	204	160 <sup>#</sup>	1"	1-1/2" **	1-1/2"	58"	28"	8"	16"	N/A	543	-
73PG	67	242,000	247	180	1"	1-1/2" **	1-1/2"	58"	28"	8"	16"	N/A	548	-
120PG	113	155,000	160	180	1"	2" **	2"	67"	31-1/2"	6"	19"	22"	749	-
190PG	113	190,000	191	180	1"	2" **	2"	67"	31-1/2"	6"	19"	22"	749	-
241PG*	109	277,000	283	180	1"	2" **	2" **	67"	31-1/2"	8"	19"	22"	901	943
361PG*	91	385,000	435	180	1"	2" **	2" **	67"	31-1/2"	9"	23"	26"	1,080	1,116
541PG*	83	623,000	627	180	2"	2" **	2" **	66"	34"	10"	22"	30-1/2"	1,313	1,569

Power gas burner with spark ignition, 100% safety shut-off. Propane gas available on request at no additional cost. No field conversion kits available.  
 Maximum inlet gas pressure for natural gas: 10" w.c. ; propane: 13" w.c. Minimum inlet gas pressure for natural gas: 4.5" w.c. ; propane: 11" w.c.  
 Burner protrudes 12" -14" from tank depending on make and model. Contact Bock for burner detail dimensions. Barometric draft control furnished with all models.

- \* ASME models available
- \*\* Nipple not included
- \*\*\* Weight includes burner and controls
- # Optional settings, contact factory



(on selected models)

**WARNING:** Do not install on combustible flooring. Installation should be in accordance with all national and/or local codes. In the absence of local codes, refer to NFPA 54 or ANSI Z.21.10.1.

**CAUTION:** The recommended maximum hot water temperature setting for normal residential use is 120°F. Bock recommends a tempering valve or anti-scald valve be installed and used according to the manufacturer's directions to prevent scalding.

**Pressures** (all): Test pressure, 300 psi; working pressure, 150 psi  
**Standard Voltage** (all): 120V, 60 Hz, 1P  
**T&P valve installed**  
**All Bock products meet or exceed current ASHRAE standards.**

For additional information and sample specifications, please visit our website - [www.bockwaterheaters.com](http://www.bockwaterheaters.com)

◆ [www.bockwaterheaters.com](http://www.bockwaterheaters.com) ◆  
 ◆ 110 South Dickinson Street ◆ Madison, Wisconsin 53703 ◆  
 ◆ Toll Free 800.794.2491 ◆ Phone 608.257.2225 ◆ Fax 608.257.5304 ◆